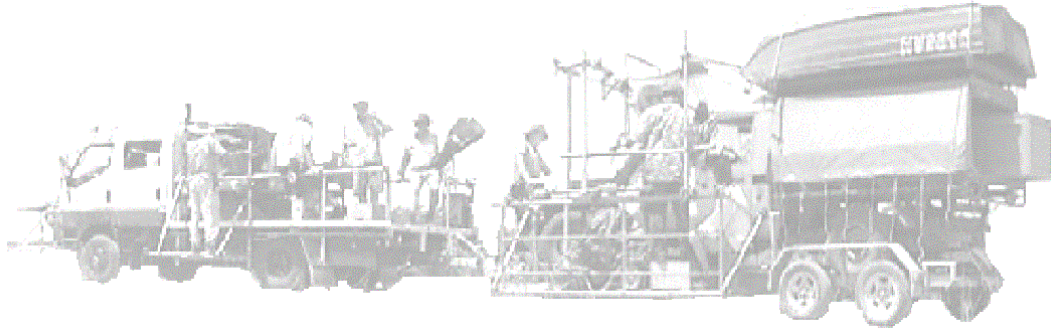


# Sean Aston Grips

Key Grip, Dolly Grip, Crane and Tracking Vehicle Operator  
P.O. Box 36, Bilambil, NSW 2486, Australia  
Telephone/ Fax (07) 55 909 259 Mobile (0407) 909 259  
E-mail [info@grips.net.au](mailto:info@grips.net.au)  
[www.grips.net.au](http://www.grips.net.au)



**Grip Trucks available:**  
**Brisbane**                      **Gold Coast**

**Booking Agent:**



## **Essential Crew**

Tel 07 3013-6285 Fax 07 3013-6286

Email: [info@essentialcrew.com.au](mailto:info@essentialcrew.com.au)

Web [www.essentialcrew.com.au](http://www.essentialcrew.com.au)

Member of



# Index

<b>Introduction</b>	<b>3</b>
<b>Grip Equipment</b>	<b>6</b>
<b>Grip Truck</b>	<b>6</b>
<b>Tracking Vehicle</b>	<b>7</b>
<b>Grip Truck Equipment</b>	<b>8</b>
<b>Mercedes 22T</b>	<b>11</b>
<b>Volvo 22T</b>	<b>11</b>
<b>Mack 15T</b>	<b>11</b>
<b>Iveco 6.5T</b>	<b>11</b>
<b>Iveco 4.5T</b>	<b>11</b>
<b><u>Dollies</u></b>	
<b>Hybrid</b>	<b>9</b>
<b>Super Hawk</b>	<b>9</b>
<b>Panther</b>	<b>9</b>
<b>Elmech</b>	<b>9</b>
<b>Elemac</b>	<b>11</b>
<b><u>Cranes</u></b>	
<b>Giraffe</b>	<b>10</b>
<b>GFM 14</b>	<b>11</b>
<b>Jimmy Jib</b>	<b>12</b>
<b>Techno Jib</b>	<b>13</b>
<b>Communications</b>	<b>12</b>
<b>Camera Mounts</b>	<b>13</b>
<b>Shooting Blackout</b>	<b>13</b>
<b>Access &amp; Rigging</b>	<b>14</b>
<b>Basic Grip Equipment</b>	<b>15</b>
<b>Available on Request</b>	<b>15</b>

## Introduction

Prior to the Film Industry I had spent 12 years in the Building Industry as a Carpenter/ Construction Manager, working in New Zealand, London, Los Angeles and New Jersey. Gaining a vast knowledge of Construction, including: consultation, planning and liasing with the huge variety of Trades and Services.

“One of my favoured skills was problem solving, which has served me well during my 15years in Film”. **‘Think Quicker, Work Smarter’**



Based on the border for 10 years, and housing my 'Grip Truck and Equipment' in Currumbin QLD, I service Brisbane, Gold Coast and Interstate. With a great Film Industry base in South East Queensland we have a wealth of equipment and Crew to service all work forms. With talents in construction we have constructed many a camera rig, including Queensland's only 21ft stills car rig, a rigid car rig for film cameras to 10ft, high speed stunt rigs, boat rigs, and vertical dolly's that will travel 27ft.

During my time here on the coast I have had then opportunity to pull together a team of proffesionals who are efficient, cost effective and highly motivated to achieve the best result possible for our clients.

Work screening includes:

Anderson's Carpet	Aurora	B&B Coffee & Bake	Bank of QLD
Bernard Fanning	Bribie Is	Brisbane Marketing	Bundy Ginger Beer
K Mart	Bundy Gold	Cadbury Schweppes	Care Free
Caterpillar (Corp)	Century Batteries	Clorox (US)	Coca Cola
Colorado	Comedy Festival	Courier Mail	Credit Union
Daniel Spencer (Music)	Darren Hayes	Dream World	Dulux
Endorphin (Music)	Energex	Ford	Gold Lotto
Hamish (Music)	Heron	Holden (Vectra)	(Calais/ Statesman)
Honda	Hope Island	Hyundai	Iron Eze,
FluffySanctuary Cove	Mc Donalds	Jupiter's Casino	Just Jeans
Kawana Waters I, II	KFC Sports	Lite & Easy	LJ HookerMagnum
Ice Cream	Mitsubishi	Myer Centre	Mahindra Scorpio
Nissan 350ZX	Old El Paso	Orange	Pacific Harbour
Panadol	Panasonic	Pantene	Pepsi
North Lakes		Powder Finger	Price Attack
Qld Newspapers	Qld Tourism	Qld University	RACQ
Roche & McGowan	Reflex	Sanctuary Cove	
Sanitarium So Good	Scooby Doo Ride	Sea World	Silver Queen
Telco (Korea)	Suncorp Metway	Super Cheap	Telstra Call waiting
Terry White Chem	Toyota	Treasury Casino	Vaalia
Virgin Airlines	Wet N Wild I,to4	Wild Turkey (Japan)	Woolworth's
Womens Day	XXXX	Leukaemia Foun	North Lakes
	Zones		

## Film Credits (Australia)

<u>Year</u>	<u>Position</u>	<u>Production</u>	<u>Production Co/ DOP/ Key</u>
2008 QLD	Key Grip	Triangle Feature	Timeless Films Bob Humphries ACS
2007 QLD	VFX Grip	Sea Patrol Series	New Holland Pictures Richard Chapelle
2007 QLD	Key Grip	Bontekoe Feature	New Holland Pictures Maarten Van Keller
2006 QLD	Key Grip	Unfinished Sky Feature	New Holland Pictures Bob Humphries ACS
2006 QLD	Dolly Grip	Bianca Ep1	Grundy TV John Stokes ACS
2005 QLD	Key Grip (Aus)	Birds in Love (Doco)	MC4 Prod (France) Laurent Charbonnier
2004 QLD	Key Grip Chase Unit	The Marine	Marine Prod John Stokes ACS
2001/02 QLD	Key Grip	Croc Hunter (Doco)	Best Picture Show David Burr ACS
2001/02 QLD	Dolly Grip	Croc Hunter (Feature)	Best Picture Show David Burr ACS/ Lester Bishop
2000/06	Key Grip	Commercials	as listed below
1999/00 QLD	Key Grip	Beastmaster 2 <sup>nd</sup> Unit US/Can Series	Coote/Hayes Production DOP (Jo Pickering/ Phil Cross)
1997/98 NSW	Dolly Grip Hybrid II	Babe II Feature 35mm	Kennedy Miller Productions Andrew Lesnie ACS/ Robbie Morgan
1997 VIC	Best Boy	Moby Dick TV Feature 35mm	Moby Dick Productions Dave Connell ACS/Mark Ramsey
1997 QLD	Dolly Grip JL Fisher	Real M <sup>c</sup> Caw Feature 35mm	PRO Films David Forman ACS/ K Jackson
1996 QLD	Grip/Lighting Dive Unit	20,000 Leagues/ TV Feature 35mm	Village Roadshow Phil Cross ACS/Jack Meyerink

## Film Credits (New Zealand)

1996	Key Grip	Warm Gun	Short Film	16mm
1996	Key Grip	The Road Back	Short Film	16mm
1995	Key Grip	Fools Gold	Short film	16mm
1995	Dolly Grip	Plain Clothes	Sth Pacific Pictures	
1994/95	Dolly Grip JL Fisher	Nga Puna Drama TV Drama Series	Nga Puna Prod	16mm
1994	Dolly Grip Elemac	Letter to Blanchy TV Comedy	Isambard Pictures	16mm
1994	Dolly Grip Motion Control	Indonesia Tourism International TVC	Silverscreen	35mm
1992/93	Dolly Grip	Nga Puna Drama	Nga Puna Production Series	

## **Australia: Production Companies Credits**

166 Films, 5050 Films, Aqua, Films, äht Works, Australian Film Co, Behan Films, Best Picture Show, Black Lab, Bruce Dunlop, Carbine, Cherub Pics, Compass, Coote Hayes, Cutting Edge, Cyclops, DNA Films, Dragon Slayer, Engine, Exit Films, Film Depot, Film Headquarters, Film & Casting Temple, Film Construction, Fish Creation, Flash Point, Good Oil, Grant Marshall, 50/50 Films, Hamburger, Head Pics, Here Films, Hub Productions, Ignite Productions, Independent Films, Intrepid Pictures, Japco, J Prod, Komodo Productions, Kennedy Miller, Liquid Fur, Luscious, Marine Productions, Mondo, Moby Dick Productions, Nobu Oceania, Ocean Pro, Ozpan Productions, Ozcam, Pepper Studios, Plush, Plaza, POD Films, Port, PRO Films, Provisible Films, Republic, Revolver Films, Roly Poly Pictures, Saraceno, Sprowles, Street Light, Sweet Shop, Synergy Films, Taxi Films, Texas 4385, Two Little Indians, Traffic, Trifol Coms, Upstage Productions, Via International, Vim, Walkabout, Warner Brothers, Zoom

## **New Zealand: Production Companies Credits:**

Airdate, Big Pictures, Film Construction, Flying Fish, Flying Start, Frame Up Films, Huia Films, Motion Pictures, Metro Films, Nga Puna, Red Barn Films, Rolling Films, Silver Fern Films, Silverscreen Productions Sky Sports, Stratford Productions TVNZ, TV3, Zee Films

## **Licenses/ Certifications (Australia)**

Prof National Drivers Licence;

All Inclusive plus, Motor Cycle	R
Heavy Truck Articulated and Truck/Trailer Combination	HC

OHS Certification Australia

WP-WK Platform Boom over	11M
Scissor Lift over	11M
Scaffolders Grade B to	45M

Advanced Open Water Dive Certification

Night Diving, Navigation, Deep Water

Firearms Permit (NSW)

Water Craft

Personal Water Craft  
Open Power Boat

# Grip Equipment

Excluding GST, prices current as at Jan 2008

## Grip Truck

### '91 Mercedes Benz 2233

330 Hp  
9M Pantec  
3.8m High  
11m overall length  
2 KVA Generator on board

**\$ 500/Day plus \$1.80/km as req**

Reg No 843FMG  
14L Twin Turbo V8 Diesel  
GVM 22 Tonne  
2.4m Wide  
1000 Kg Tail lifter  
\$1.50/km for Travel

### '02 Iveco Van 6517

170 Hp  
6M Van  
All inclusive price

**\$ 800/Day plus \$1.50/km as req**

Reg No GRT09  
2.8 Turbo Diesel  
GVM 6.5 Tonne

## ATV

### 4WD Quad Bike

**\$ 250/Day**

400cc 4WD Kawasaki ATV with Scaff rigging all around for All Terrain Camera Tracking

Low-pressure balloon tyres cause little or no damage to environmentally sensitive locations.

Complete with it's own 7'x 4' Trailer for Equipment Cartage



## 4 x 4 Off Road

**\$ 250/Day**

### 1998 Mitsubishi Canter 4x4

extremely tough off road equipment cartage and access vehicle as used by Forestry, Rescue, & Military



## Tracking Vehicle

\$ 700/Day

### **1998 Mitsubishi Canter 4x4**

GVM 5.5T

3.6M x 2.3M Tray Back,

Electric Trailer Brake Controller

15" LCD Agency Monitor

Driver surveillance system

Remote controlled electronic variable controlled Air Bag Suspension

Scaff Rigged all around, with shooting platforms of multiple configurations.

Standard 6KVA Power Supply available (2x 3kVa Honda with link).

Can Carry Power supply up to 10KVA

5 Unit Communication System included,

Reg No 183GJM

Dual Wheel 4 Wheel Drive

Dual cab 7 Seater

Directors Booth seats 5

Rotating Safety beacons

12x Reflective Vests



## 5th Wheeler Low Loader

\$ 900/Day

### **Insert Trailer excluding Tow Vehicle**

20' x 8' Gooseneck

ride height controlled

disk brakes

independent suspension

folding side platforms increase shooting access by 1 1/2' on either side. Scaffold safety and riggings rails around deck.



# Grip Truck Equipment

\*\* Unless noted all equipment is carried in the truck

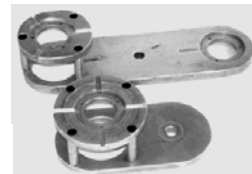
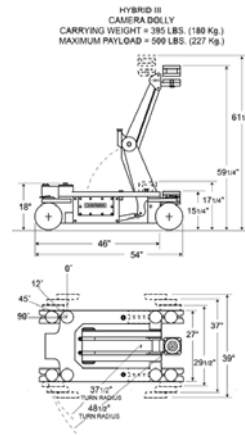
## Dollies

### **Chapman Hybrid III**

**\$ 550/Day**

- |                            |                      |
|----------------------------|----------------------|
| Two steering modes         | crab / conventional  |
| Hybrid Accessories Trolley |                      |
| 1x Low Shot Bracket        | 1x Set Track Wheels  |
| 2x Low boards              | 1x Rotating Offset   |
| 1x Satchler adapter        | 1x Set Studio Wheels |
| 2x High boards             | 2x Lifting Bars      |
| 1x Gravy                   | 1x bump Stop         |
| 1x 24" Ubangi              | 1x 12" Ubangi        |
| 12" Moy Riser              | 1x Push Bars         |
| scaff starter set          | 2x Seats             |
| 1x Seat Riser              | 1x Accessory Pouch   |
| 1x Charger Pack            | 1x Power Cord        |

weight: 180 kg	5 lifts per charge
lift capacity:	220kg
width:	680mm to 812mm lgth: 1370 mm
maximum elevation (w/o riser)	1600 mm
minimum elevation (low level head)	140 mm



## Dollies

### **Elmech Dolly**

Two steering modes  
 Electric Rising Column  
 1x Hand Controller  
 12" x Riser  
 2 x Seats and Ext Arms  
 4 x Battery Boards  
 1x Set Combo Studio/ Track Wheels

**\$ 350/Day**

crab-conventional  
 2x Batteries & Battery Bag  
 1x Charger  
 6" Riser  
 1x Seat adapter  
 1/2 x Snake Arm

### **Western Dolly**

High Speed Pneumatic Wheels, (low rider)

**\$ 100/Day**

### **Pipe Dolly**

Pipe or Track, Double Buggy Wheels, Flat Base

**\$ 100/Day**

### **Ubangy**

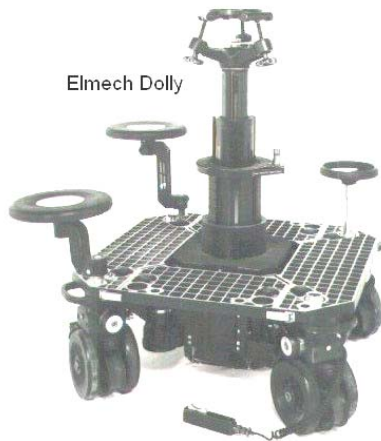
Movietech sliding Ubangy  
 Movietech Gas Riser

**\$ 100/Day**

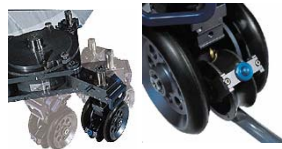
**\$ 25/Day**



Gas Riser



Elmech Dolly



## Track

100 foot Precision Black Track **\$ 40/ea**  
 incl 50' extendable to 1m for Cranes  
 in 8' lengths plus 5', 3' lengths  
 6x Black Track Curves = 180° **\$ 50/ea**

Tracking Boards and covers always available in the Truck

**Cranes**

**Cranes**

**Mini Jib**

**\$ 100/Day**

Mini Jib Crane. Mounts on to Euro Boss on a Dolly and also to Heavy Duty Tripod legs allows the operator to Crane on a 5' reach

**Filmair Giraffe Crane** Highly versatile location and studio crane **\$ 700/Day**

**Giraffe Modes**

Version/ pass	Track width	Min Lens Height	Fulcrum to Lens	Max Lens Height	Lens Rise	Max load	Crane Weight	Overall Length
V 1	Std	-0.25m (-9")	2.4m (7'10")	3.6m (11'8")	2.1m (6'10")	250 kg	884 kg	4.2m (13'7")
V 2	Std	-1.5m (-4'9")	4.25m (13'10")	4.9m (16')	4.7m (15'4")	160 kg	1100 kg	5.85m (19')
V 3	Ext	-0.5m (-17")	3.4m (11')	4.9m (16')	3.7m (12')	250 kg	860 kg	6.1m (19'9")
V 4	Ext	-1.9m (-6'2")	5.1m (16'6")	6.15m (20')	6.4m (21')	250 kg	1225 kg	7.8m (25'4")
V 5	Ext	-3.2m (-10'5")	6.7m (21'10")	7.5m (24'4")	9.0m (29'3")	160 kg	1180 kg	9.4m (30'6")
V 6	Ext	-5.4m (-17'6")	9.5m (31'6")	9.5m (31')	13.0m (42'3")	100 kg	1145 kg	11.9m (38'6")
<b>Hot Head</b>								

## Cranes

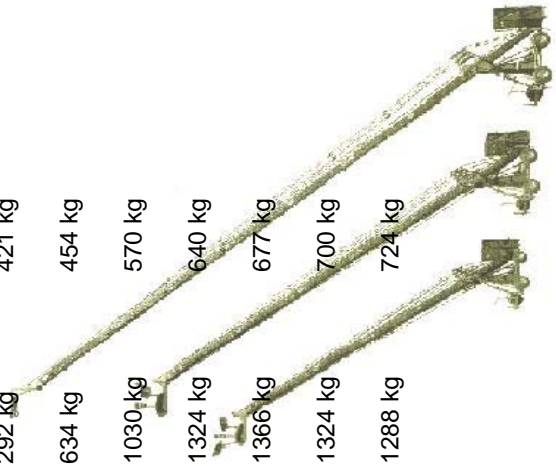
Australia's Largest Ride on Camera Crane \$ 1600.00 /Day

### GF 14 Modes

available in separate truck

intermediate versions of 3' extensions

Version/ pass	Arm Reach	Max Lens Height	Max payload	Max Counter Weight	Crane Weight ex counter weight
V1	3.36 m	4.03 m	250 kg	292 kg	421 kg
2	11'	13'2"			
V3	5.34	5.60 m	250 kg	634 kg	454 kg
2	17'6"	18'4"			
V5	7.31 m	7.17 m	250 kg	1030 kg	570 kg
2	23'11"	23'6"			
V7	9.29 m	8.75 m	250 kg	1324 kg	640 kg
2	30'5"	28'8"			
V9	11.27 m	10.32 m	140 kg	1366 kg	677 kg
1	36'11"	33'10"			
V11	13.31 m	12.28 m	85 kg	1324 kg	700 kg
H/Head	44'8"	40'3"			
V13	15.29 m	13.85 m	40 kg	1288 kg	724 kg
H/Head	50'1"	45'5"			



## Communications

\$ 300/Day



**Jands  
Ezicom  
E400**  
1 **4 channel  
talkback  
master**

The E-400 is a 1 RU (Rack Unit) basic 4 channel master station.  
Basic 4 channel intercom with call button and microphone switch. Additional facilities include: a call buzzer, Program input, and desk lamp power supply.  
Use with E100 beltpack and Beyer headsets

**Jands  
Ezicom  
E100**  
4 **belt pack  
sub  
station**

The Model E-100 Belt Pack is a single channel beltpack. The front holds the Mic On/Off switch and LED, Volume Control, Call Switch and Call LED. The headset is connected on a 4-pin XLR connector. 3 pin intercom and loop-through connectors.  
Use with E400 master stations and Beyer headsets

3 6m Cables  
(20')

3 20m Cables  
(60')



**Beyer  
Dynamic  
DT108**  
3

The DT 108 single-muff headset is designed for live, remote broadcasting, for studio, film and TV-applications. One side is open to monitor ambient sound. The protective ear cap attenuates up to 20 dB of ambient noise. The headset features a noise cancelling microphone. Highly sensitive headphone and microphone transducers. Excellent ambient noise attenuation. Capable of handling very high SPL. Rugged construction. Excellent comfort for long-term wearing. Modular construction for easy servicing



**Beyer  
Dynamic  
DT109**  
3

For many years, the DT 109 has been the standard headphone/microphone combination for live, remote broadcasting, studio, film, TV and language laboratory application. The headphone transducers feature extended frequency response. Adjustable, noise-cancelling microphone provides clear, audible speech transmission. Highly sensitive headphone and microphone transducers. Excellent ambient noise attenuation. Capable of handling very high SPL. Rugged construction. Excellent comfort for long-term wearing. Modular construction for easy servicing

\$300/Day

## Camera Mounts

\*\* **Kaleidoscope Hot Head** (see additional equipment)  
2 Axis Hot Head with Hand Wheel Controls, Suitable for large camera packages on both Giraffe and GFM14



\*\* **Scorpio Remote Head** (see additional equipment)  
3 Axis Remote Head with Hand Wheel Controls, Suitable for large camera packages on both Giraffe and GFM14

### **Head**

Weaver Steadman

**\$ 250/Day**

\*\* F7 2 Axis Head (available on request)

**\$ 200/Day**



### **Accessories**

1 x Bazooka Base	Ladder Rig
Hi Hat	2 x Cardellini Headlocks
1 x Ladder Cam and Spud	1 x Sachtler Half Bowl
1 x Double Paddle mounts	1 x Triangle Flat Plate w/Spud
1 x Short Ubangy (offset w/ Spud)	
1 x Rocking Plate	1 x Cine Saddle
1 x Steadi Bag	1 x Adjustable Tilt Plate
1 x Shaker Head	2 x Headlocks
1 x Adjustable Offset	2 x 3 Way Leveler
1 x 6" Riser	1 x 12" Riser
7 x Magic Arms	1 x Paddle mount
2 x Trophy Bowl	2 x Offset Bowls

The Cardellini Head-Lock



### **Safety**

Lexan Safety Sheets, Various sizes 6mm 4x4, 4x2, 2x2, 2x1

## Black outs

Large quantity of Blacks including Wool/ Moleskins and Velvet

all large Blacks

**\$ 100/ea**

2x 20x 20 Moleskin

1x 20x 12 Moleskin

2x 20x12 Wool

1x 10x 10 Moleskin

2x 15x 15 Moleskin

1x 10x 10 Moleskin

1x 12x 12 Deep Shooting Velvet

Large amount of Washing

2x 4'x4' Floppy's

1 x 6x2 Floppy Meat axe

## Weather Protection

2 x 3.0m x 3.0m Quikshade canopy (Black)

**\$ 100/Day**

1 x 4.5m x 3.0m Quikshade Canopy (Camo)

**\$ 150/Day**

4x Quikshade Canopy Sides

3x Breathable Shade Sides

3 x 1.5 m Ø Umbrellas

Variety of Tarpaulins

1 x Roll Black Plastic

## Access and Rigging

### Scaffold Towers

1x 6m (20') Tower (1.8 x 1.8m base)      **\$150/day**  
1x 4m (12') Tower (1.8 x 1.2m base)      **\$100/day**  
with Outriggers, on Wheels or Screw Jacks  
23x Blue Braces      9x Yellow Horizontal  
2x Blk Cross Brace (20' Tower)      1x Blk Brace (12' Tower)  
5x Tower Platforms      1x 14' Tower Ladder  
4x Blue Outriggers      8x AD7 Outrigger



### Scaffolding

Large quantity of pipe and fittings for light rigs, car rigs,  
8x1', 8x2', 8x3', 8x4', 8x5' 8x6', 8x8', 8x10', 2x15', 4x20',  
6x Tri Truss Frames units  
28x Swivels  
76x 90° joiners  
17x Minge Clamps  
8x Straight Joiners  
2x Scaff C stand Head  
3x Big Bens      3x Large Tee's  
2x 800 mm Screw Jacks  
4x 300 mm Screw Jacks



### Tube

Approximately 400' Aluminium Scaffold Tube @ \$1.00 /ft

### Mega deck

2 x 8'x 4', 1 x 4'x 4', 1x 4'x2' Mega deck      **\$ 50/Day**  
2 x Leg Doublers (joins 2 mega decks to form a stage)  
full range of height options available from scaffold tube

### Planks

2 x 6m Aluminium Planks      **\$ 10/Day**  
4 x 3.6m Aluminium Planks  
2 x Tommy Tucker Supports      2 x 3.6m Timber Planks  
2 x Pair 4"x 2" wall busters

## Shot Bags

100x 12 kg Black/ White Shot Bags  
10x 12 kg Blue/White Shot Bags  
3x 8 kg Sand Bags

## Basic Grip Equipment

Apple boxes	pancakes	Planks
G Clamps	safety harnesses	Magic arms
Wedges	blocks, packers	4 x Stacks Sushi's
Lexan	Welders Clamps	Sushi Boards
F Clamps	9 x G Clamps	2x Stacks Tri Hats
Timber	Ratchet Straps	Fire Extinguisher
First Aid Kit	6 mm, 12 mm Safety Ropes	
2 x Ext. Ladder	1 x Skateboard Dolly	2 x Waco Ladders
2 x Polecats	4 x Camera Shot Bags	12 x Chain Grips
4 x Hi Boys	2 x Med Hi Boys	3 x C stands

### Tools

1 x 9" Grinder	1 x 4" Grinder	1 x Battery Drill
1 x Battery Charger	1 x Power Saw	1 x Saber Saw
1 x Wheel Jack	1 x Flat Jack	1 x Jigsaw
1 x Pipe cutter	2 Kva Generator	Electric Drill
2 Hp Compressor	Rattle Gun	Dive Kit incl, Tank, Reg, Wet Suit etc
170Amp Mig Steel/Aluminium		1x 14" Chop Saw

## Equipment available on request

All additional equipment is available through *Sean Aston Grips*

### **GFM 14 (50 ft Crane)** in increments of 3' starting at 11'

2 Pass	35 mm	30'5" reach
1 Pass	35 mm	36' 11" reach
Hot Head	35 mm	46' 10" reach
Hot Head	16-mm/Video	50' 1" reach

### **Techno Jib(24 ft Crane)**

Maximum Height	7.8m (25'6")
Max/ Min Reach	3m- 7.8m (9'- 25'6")
Telescopic Travel	5m (15')

Scorpio 3 Axis Remote Camera Head  
Scorpio Remote Focus

Kaliedescope Hot Head 2 Axis Remote Camera Head

Super Panther III Dolly	Super Panther Jib
Weaver Steadman 2 axis Head	F7 2 Axis Head
Super hawk 2 Dolly	Dario Dolly
F350 Tracking Vehicle	4 wheel Drive Ute's
Extra Scaffold Towers	Generators
Extra Track	Complete circle track
4 wheel Drive Bikes and Trailers	Extra Black outs



